

ATTENTION  
OBSERVE PRECAUTIONS  
FOR HANDLING  
ELECTROSTATIC  
DISCHARGE  
SENSITIVE  
DEVICES

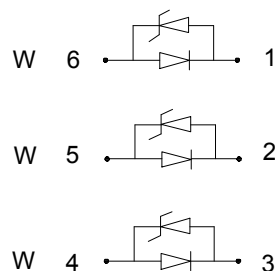
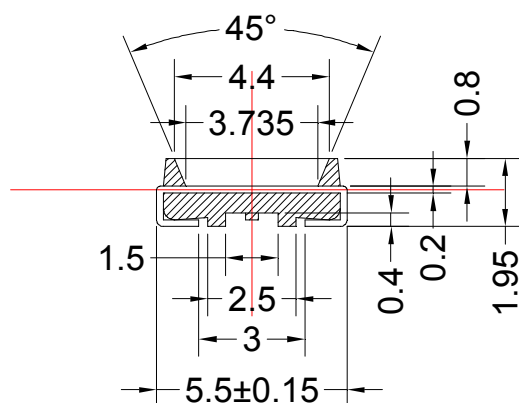
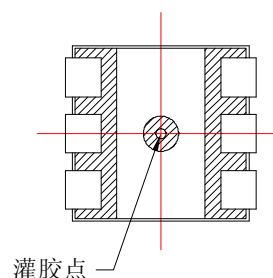
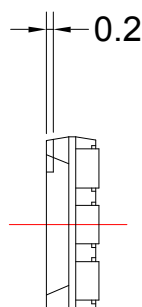
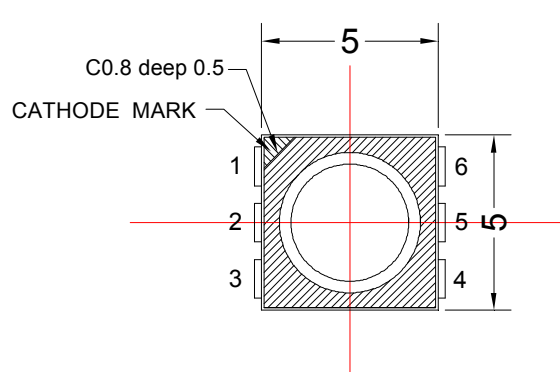
## 1、Features/特 征:

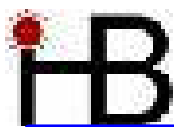
- I Emitting Color/发光颜色: Warm White
- I Lens Type/封装特性: Yellow Diffused/黄色散射
- I Device Outline/外形特征:  $5.5 \times 5.0 \times 1.95$  (unit:mm)
- I RoHS compliant/符合 RoHS 标准

## 2、Applications/应 用:

- I Backlight for Mobile, Machine Vision, LCD Display/手机、电话、显示屏背光源
- I Backlight in Dashboard and switch of Automive/汽车仪表盘、记程器背光源

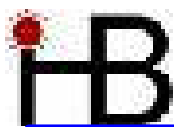
## 3、Outline Dimensions/产品外形尺寸 (units:mm) :



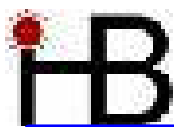


**4、Absolute maximum ratings/极限参数 (Ta = 25℃):**

Parameter 参数	Color 颜色	Symbol 符号	Test Condition 测试条件	Values 数值		Unit 单位
				Min.	Max.	
Power Dissipation 损耗功率	White	Pd	——	——	95	mW
	White			——	95	
	White			——	95	
Reverse Voltage 反向电压	White	VR	IR = 30 $\mu$ A	5	——	V
	White					
	White					
Pulse Current 正向峰值电流	White	Ifp	Duty=0.1, 1kHz	——	100	mA
	White					
	White					
Forward Current 正向工作电流	White	Ifm	——	——	25	mA
	White					
	White					
Operating Temperature 工作温度范围	White	Topr	——	-40	+85	℃
	White					
	White					
Storage Temperature 储存温度范围	White	Tstr	——	-40	+85	℃
	White					
	White					

**5、Electrical and optical characteristics/光电参数 (Ta = 25℃):**

Parameter 参数	Color 颜色	Symbol 符号	Test Condition 测试条件	Values 数值			Unit 单位
				Min	Typ	Max	
Forward Voltage 正向电压	White	V <sub>F</sub>	I <sub>F</sub> = 20mA	—	3.3	3.8	V
	White			—	3.3	3.8	
	White			—	3.3	3.8	
Reverse Current 反向电流	White	I <sub>R</sub>	V <sub>R</sub> = 5V	—	—	30	μ A
	White			—	—	30	
	White			—	—	30	
Chromaticity coordinates 色坐标	White	CIE-X	I <sub>F</sub> = 60mA	—	—	—	
		CIE-Y		—	—	—	
Luminous Intensity 发光强度	White	I <sub>v</sub>	I <sub>F</sub> = 20mA	770	1500	—	mcd
	White			770	1500	—	
	White			770	1500	—	
Luminous Intensity 发光强度	White	I <sub>v</sub>	I <sub>F</sub> = 60mA	2130	4000		mcd
Viewing Angle 发光指向角	White	2 θ 1/2	I <sub>F</sub> = 20mA				Deg.
	White			—	120	—	
	White						



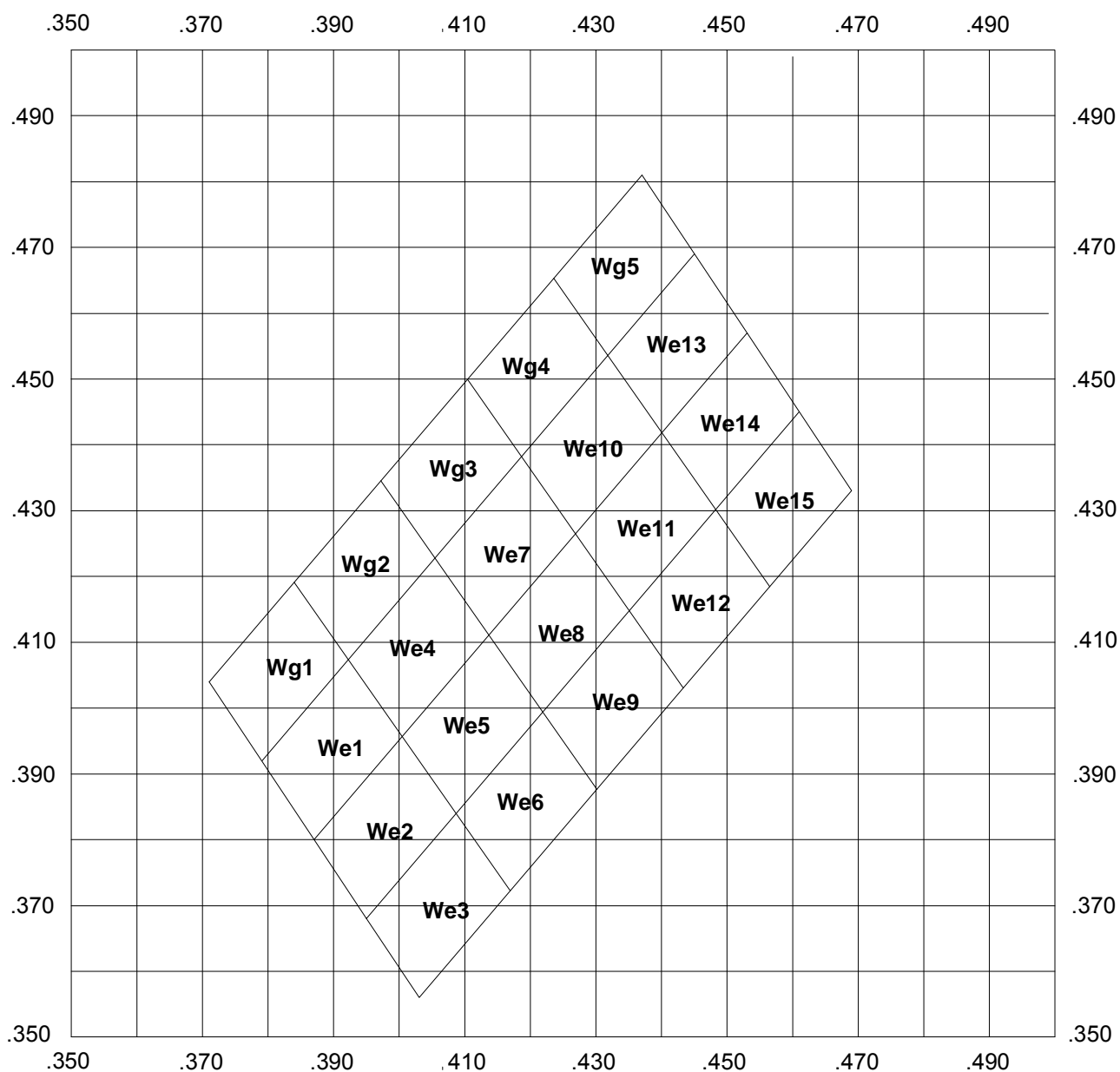
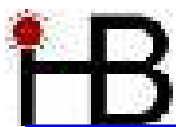
**6、Chromaticity coordinates Ranks /色坐标分档:**

(Ta=25℃)

色坐标误差:  $\pm 0.01$ 。

代码	轴	参数				代码	轴	参数			
We1	X	0.387	0.379	0.392	0.400	We2	X	0.400	0.409	0.395	0.387
	Y	0.380	0.392	0.407	0.396		Y	0.396	0.384	0.368	0.380
We3	X	0.403	0.395	0.409	0.417	We4	X	0.400	0.392	0.405	0.414
	Y	0.356	0.368	0.384	0.372		Y	0.396	0.407	0.423	0.411
We5	X	0.414	0.422	0.409	0.400	We6	X	0.417	0.409	0.422	0.430
	Y	0.411	0.399	0.384	0.396		Y	0.372	0.384	0.399	0.388
We7	X	0.414	0.405	0.419	0.427	We8	X	0.427	0.435	0.422	0.414
	Y	0.411	0.423	0.438	0.426		Y	0.426	0.415	0.399	0.411
We9	X	0.430	0.422	0.435	0.443	We10	X	0.427	0.419	0.432	0.440
	Y	0.388	0.399	0.415	0.403		Y	0.426	0.438	0.454	0.442
We11	X	0.440	0.448	0.435	0.427	We12	X	0.443	0.435	0.448	0.457
	Y	0.442	0.430	0.415	0.426		Y	0.403	0.415	0.430	0.418
We13	X	0.440	0.432	0.445	0.453	We14	X	0.453	0.461	0.448	0.440
	Y	0.442	0.454	0.469	0.457		Y	0.457	0.445	0.430	0.442
We15	X	0.457	0.448	0.461	0.469	Wg1	X	0.379	0.371	0.384	0.392
	Y	0.418	0.430	0.445	0.433		Y	0.392	0.404	0.419	0.407
Wg2	X	0.392	0.384	0.397	0.405	Wg3	X	0.405	0.397	0.410	0.419
	Y	0.407	0.419	0.435	0.423		Y	0.423	0.435	0.450	0.438
Wg4	X	0.419	0.410	0.424	0.432	Wg5	X	0.432	0.424	0.437	0.445
	Y	0.438	0.450	0.465	0.454		Y	0.454	0.465	0.481	0.469

Diagram



## 7、Typical electrical/optical characteristic curves/光电特性曲线:

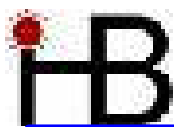


Fig.1 正向电流 Vs. 正向电压

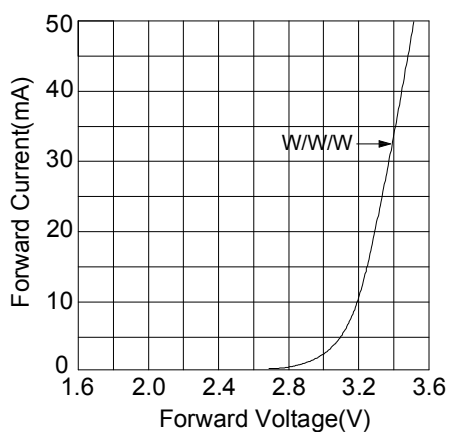


Fig.2 相对亮度 Vs. 正向电流

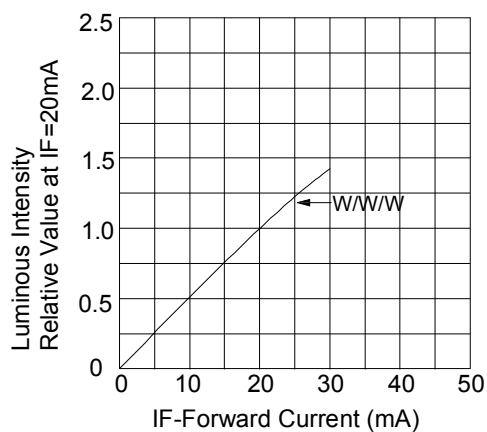


Fig.3 正向电流 Vs. 环境温度

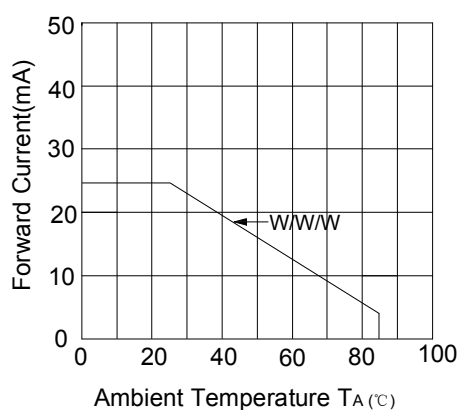


Fig.4 相对亮度 Vs. 环境温度

