

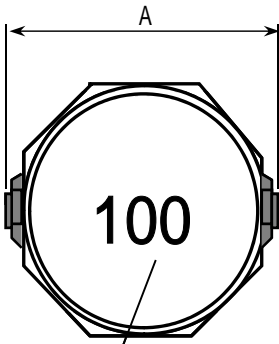
CUSTOMER:	REF NO : S110123		
DESCRIPTION:	SCB8D43-100M	VERSION:A	PAGE:1/5

SPECIFICATION

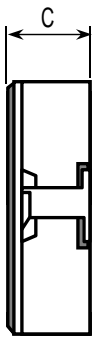
Compliant RoHS

DIMENSION: mm

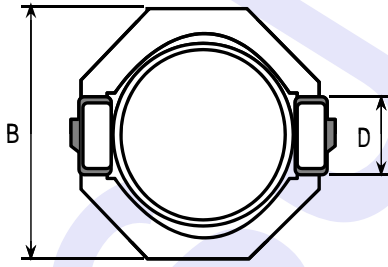
A	B	C	D	P1	P2	P3	P4
10.5 max	8.3 max	4.8 max	2.5±0.3	10.1	6.1	2.8	2.0



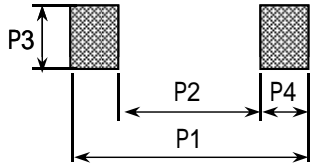
Top View
marking " 100 "



Side View



Bottom View



Pad View

ELECTRONIC CHARACTERISTICS

INDUCTANCE CH-100LCR/f=1KHz/0.25V	DCR at 25°C CH-502AC	DCI CH-301A +CH-100LCR	WIRE 1UEW	TURNS (Ref)	Rated Current (A)max
10.0μH±20%	75.0m max	L3.2A L0A×70%	Ø0.35mm	11	3.2

APP	CHK	DRG
		何自媚

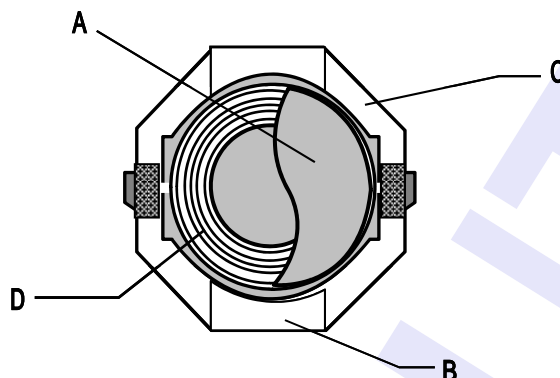
SAMPLE NO.	
MATSUTA NO.	68-843100400Q
SPEC. NO.	
ISSUE DATE.	2011-6-28

CUSTOMER:	REF NO : S110123		
DESCRIPTION:	SCB8D43-100M	VERSION: A	PAGE: 2/5

SPECIFICATION

Compliant RoHS

MATERIALS LIST:



NO	ITEM	MATERIALS	MANUFACTURER	UL FILE NO
A	* CORE	DL5 DR8.0×4.2 D3 OR EQUIVALENT	TAK FERRITE CO.,LTD	N/A
B	CAP	DL5 SRI8.0×6.5×3.4 OR EQUIVALENT	TAK FERRITE CO.,LTD	N/A
C	BASE	C-8D43	SHUOCHENG ELECTRON CO.,LTD	E 54705
D	WIRE	1UEW 130°C	FENG CHING METAL CORP	E172395
	SOLDER	NP303Z B17	NIHON GENMA	N/A
	EPOXY	G-500	EMERSON	N/A

NOTE: *As per client claimed, it is possible the source of lead in Black Magnet could be from the ceramic material of that electronic component which is exempted by RoHS regulatory(Directive 2002/95/EC of The European Parliament and of the Council of 27 January 2003).

APP	CHK	DRG
		何自媚

SAMPLE NO.	
MATSUTA NO.	68-843100400Q
SPEC. NO.	
ISSUE DATE.	2011-6-28

MATSUTA CO.,LTD.

Flat 15, 10/F, Block B, Tonic Industrial Centre,
19 Lam Hing Street, Kowloon Bay, Hong Kong.

Tel: (852) 2796 6693

Fax: (852) 2796 3530, 2754 5674

E-mail: matsuta@matsuta.com.hk

Web site: <http://www.matsuta.com>

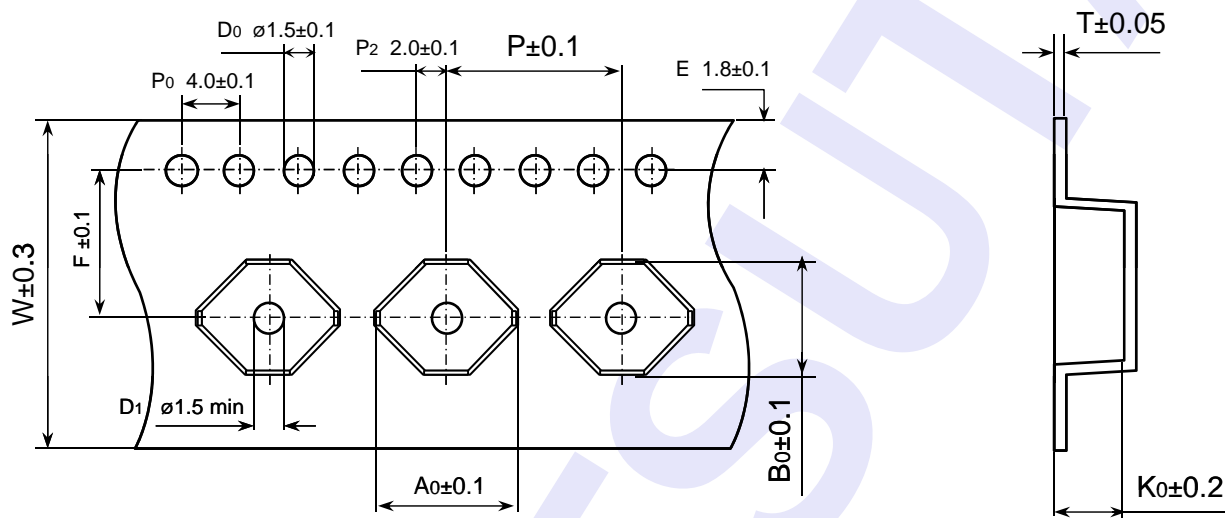
CUSTOMER:			
DESCRIPTION:	SCB8D43-100M	REF NO :	S110123

VERSION:A | **PAGE:3/5**

SPECIFICATION

Compliant RoHS

Dimensions for carrier tape with packed quantities (unit: mm)



TYPE	DIMENSIONS							Reel	Quantities (PCS/Reel)	Quantities (Reel/cased)
	A_0	B_0	W	P	T	F	K_0			
SCB8D43	10.6	8.4	16.0	16.0	0.40	7.5	4.7	330×16	500	3 / 1500

APP	CHK	DRG
		何自媚

SAMPLE NO.	
MATSUTA NO.	68-843100400Q
SPEC. NO.	
ISSUE DATE.	2011-6-28

MATSUTA CO.,LTD.

Flat 15, 10/F, Block B, Tonic Industrial Centre,
19 Lam Hing Street, Kowloon Bay, Hong Kong.

Tel: (852) 2796 6693

Fax: (852) 2796 3530, 2754 5674

E-mail: matsuta@matsuta.com.hk

Web site: <http://www.matsuta.com>

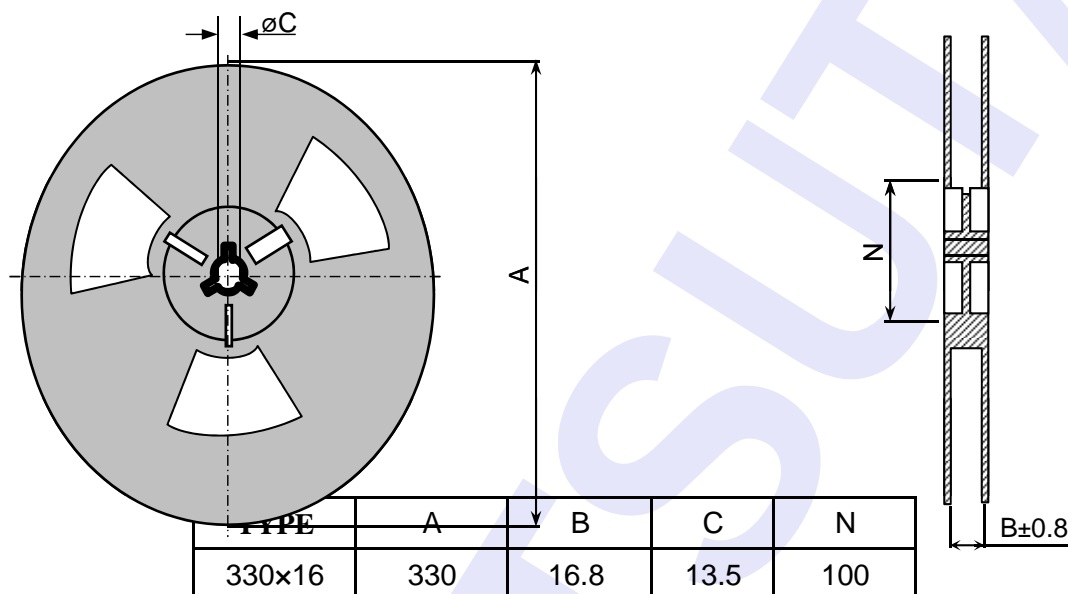
CUSTOMER:		
DESCRIPTION:	SCB8D43-100M	REF NO : S110123

VERSION:A **PAGE:**4/5

SPECIFICATION

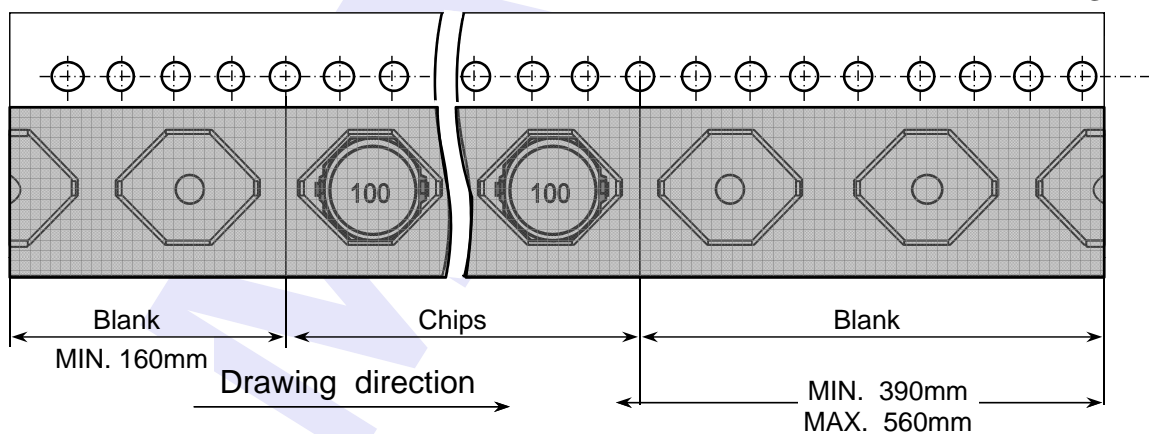
Compliant RoHS

DIMENSION: mm



END

START



APP	CHK	DRG
		何自媚

SAMPLE NO.	
MATSUTA NO.	68-843100400Q
SPEC. NO.	
ISSUE DATE.	2011-6-28

MATSUTA CO.,LTD.

Flat 15, 10/F, Block B, Tonic Industrial Centre,
19 Lam Hing Street, Kowloon Bay, Hong Kong.

Tel: (852) 2796 6693

Fax: (852) 2796 3530, 2754 5674

E-mail: matsuta@matsuta.com.hk

Web site: <http://www.matsuta.com>

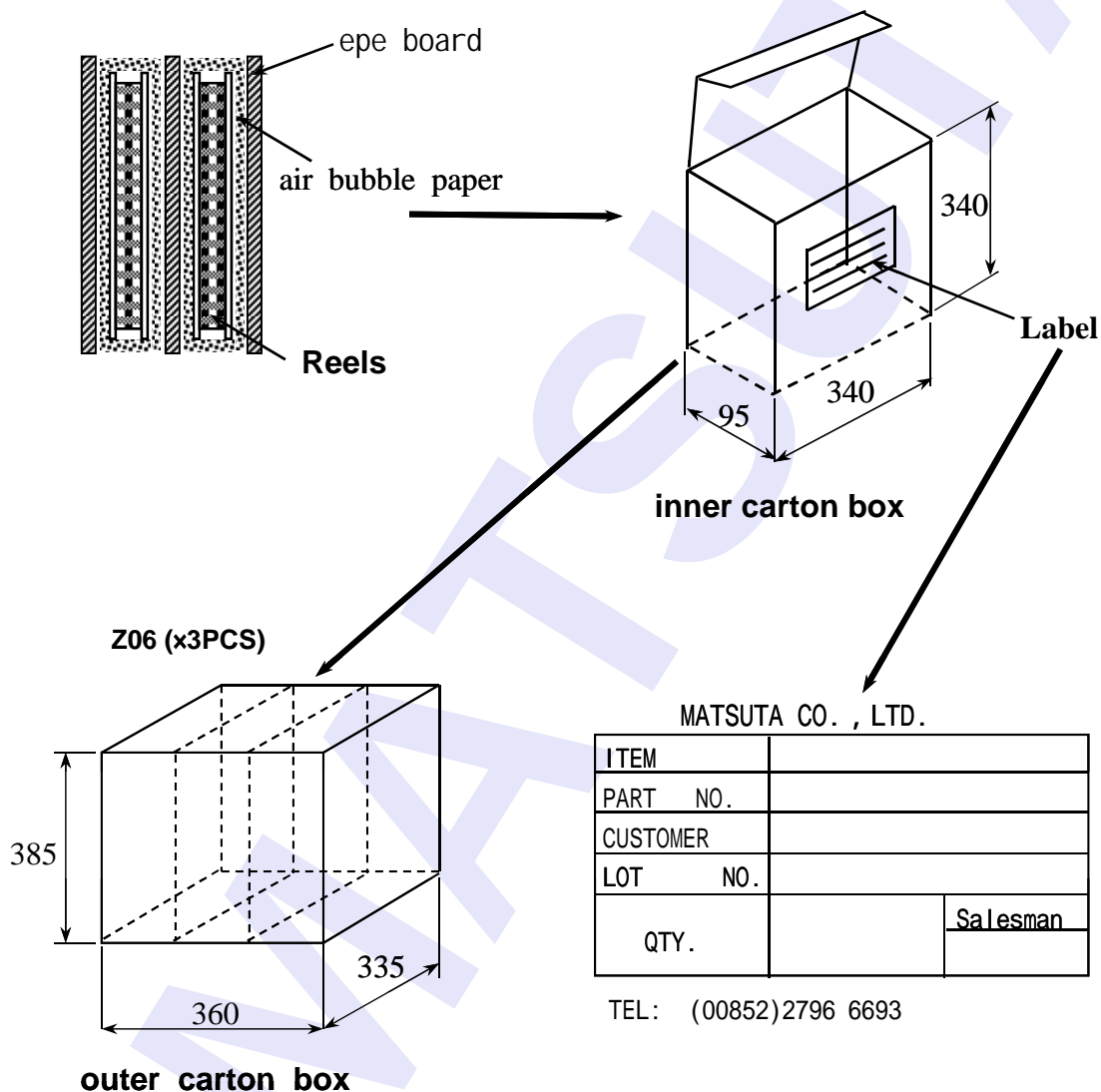
CUSTOMER:			
DESCRIPTION:	SCB8D43-100M	REF NO :	S110123

VERSION:A | **PAGE:5/5**

SPECIFICATION

Compliant RoHS

Packaging of the box (UNIT:mm)



ITEM	
PART NO.	
CUSTOMER	
LOT NO.	
QTY.	Salesman

TEL: (00852)2796 6693

APP	CHK	DRG
		何自媚

SAMPLE NO.	
MATSUTA NO.	68-843100400Q
SPEC. NO.	
ISSUE DATE.	2011-6-28

MATSUTA CO.,LTD.

Flat 15, 10/F, Block B, Tonic Industrial Centre,
19 Lam Hing Street, Kowloon Bay, Hong Kong.

Tel: (852) 2796 6693

Fax: (852) 2796 3530, 2754 5674

E-mail: matsuta@matsuta.com.hk

Web site: <http://www.matsuta.com>