

## 2-conductor lighting connector; Standard version; continuous service temperature 105°C

Item No.: 224-112



2-conductor lighting connector; Standard version; continuous service temperature 105°C

### Marking

RoHS ✓  
Compliant

### Business data

Supplier	WAGO
Item no.	224-112
GTIN / EAN	4044918583596
Content	1
Order amount	100
Customer item number	

### Notes

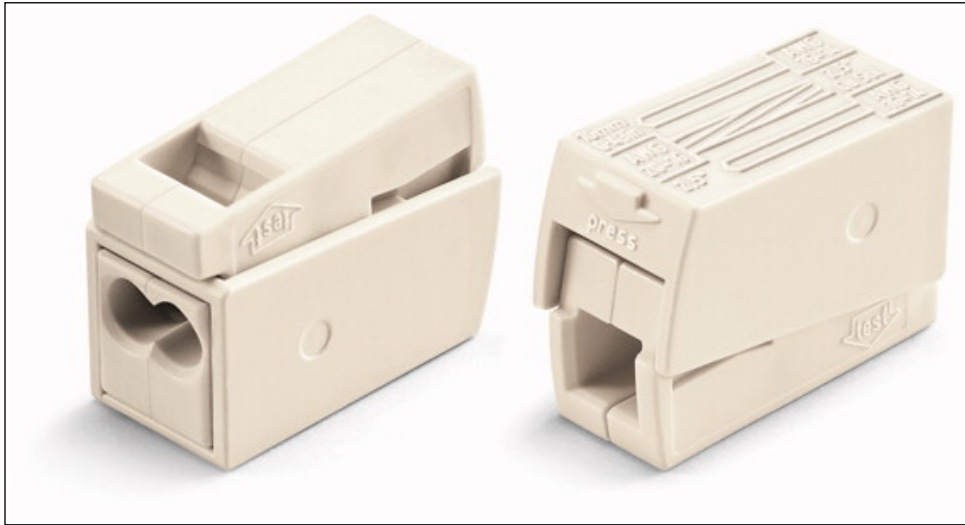
### Technical data

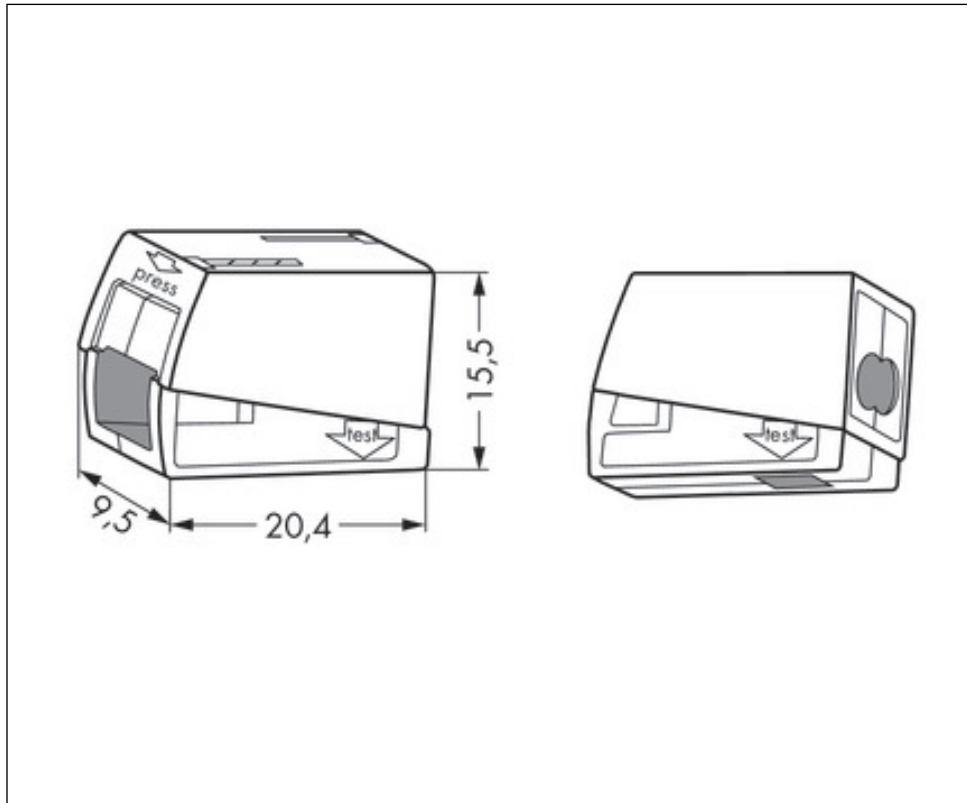
#### Miscellaneous

No. of poles	1
Total number of connection points	3
Total number of potentials	1
Color	white
Rated voltage (II / 2) [V]	400 [V]
Rated surge voltage (II / 2) [kV]	4 [kV]
Nominal current [A]	24 [A]
Connector (1)	Installationsseite
Connection technology	PUSH WIRE®

Technical data	
Number of connection points	2
Actuation type	Push-in
Connectable conductor materials	Kupfer
Solid sizes	1 ... 2.5 mm <sup>2</sup> / 14 ... 12 AWG
Strip length	9 ... 11 mm / 0.35 ... 0.43 in
Connector (2)	Leuchtenseite
Connection type 2	CAGE CLAMP®
Number of connection points (2)	1
solid, connectable 2	0.5 ... 2.5 mm <sup>2</sup> / 20 ... 16 AWG
fine-stranded, connectable 2	0.5 ... 2.5 mm <sup>2</sup> / 20 ... 16 AWG
Type of wiring	Side-entry wiring
Fire load [MJ]	0.046 [MJ]
Weight [g]	2.066 [g]
Width	9.5 mm / 0.374 in
Height	15.5 mm / 0.61 in
Length	20.5 mm / 0.807 in
Safety information 1	In grounded power lines

## Images & drawings





#### Address

WAGO Kontakttechnik GmbH & Co. KG

Hansastr. 27

32423 Minden

Telefon: 0571/887-0

Fax: 0571/887-169

<http://www.wago.com>

© WAGO Kontakttechnik GmbH & Co. KG

Technische Änderungen und Irrtümer vorbehalten.